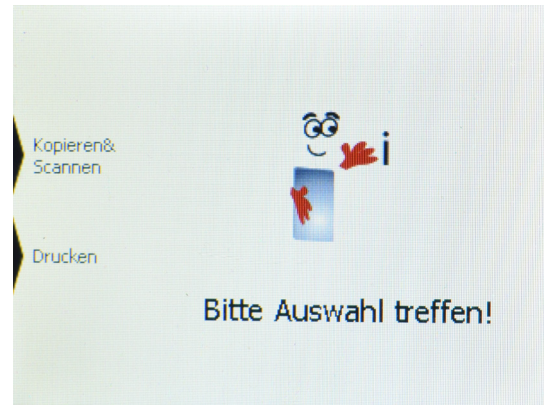


Saarland University - Instruction manual

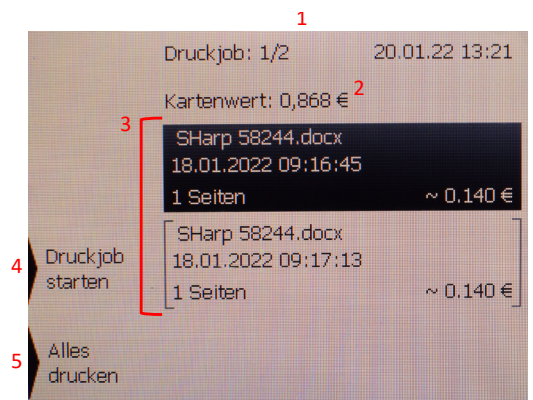
1. Unlock printer

- Insert card
- If there is a print job in the queue, the following screen appears. If there is no print job, the user interface of the printer is enabled.
- Key F3: Print: List of print jobs opens up
→ Section 2 Printing from the PC
- Key F4: Copy & Scan: Activates the user interface of the printer.
→ Section 3 printer user interface



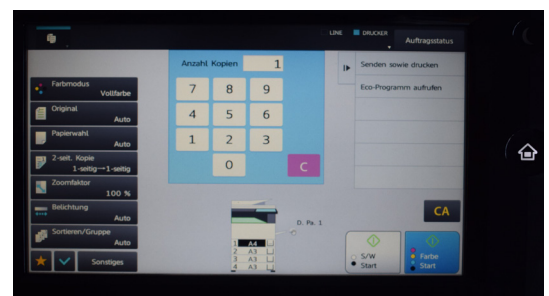
2. Printing from PC: QPILOT

1. Number of selected/all print jobs
2. Monetary value of the card
3. Listing of the print jobs with various information
4. Key F3: Start selected print job
5. Key F4: Start all available print jobs



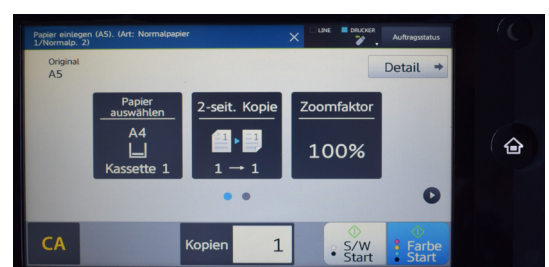
3. Printer User Interface: copying extended

- Options color/black/white; one-sided/two-sided;...
- Selection of number of copies
- Reset number
- Start copies for black/white SW
- Start copies for color
- Home Button → Chap.4 General Menu



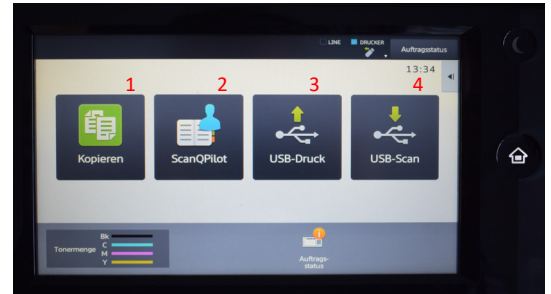
4. Printer User Interface: Simple Copying

- Original format display
- Copy settings
- Additional copy settings
- Number of copies
- Start copies for color/black/white



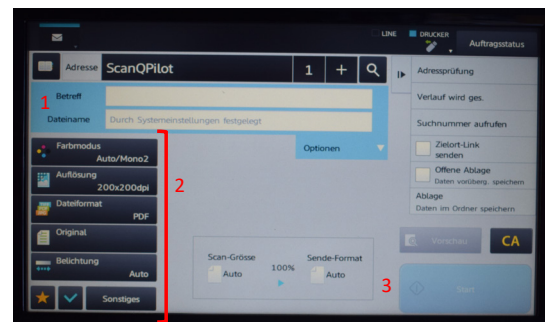
5. General Menu

1. Copying → chapter 3
2. Scan to QPILOT
3. Print from USB
4. Scan to USB Stick



6. Scan to PC: ScanQPilot

1. Subject or file name
2. Scan options
3. Start scan



7. Print & Scan: USB Stick

- When the USB stick is inserted, the following window opens
- Clicking on „Print from USB“ opens a list of printable files. The file to be printed can be selected, the settings for printing can be configured and the printing can be started. Note: the default setting is color printing
- Click on „Scan to USB“ to open the scan menu with the scan settings

